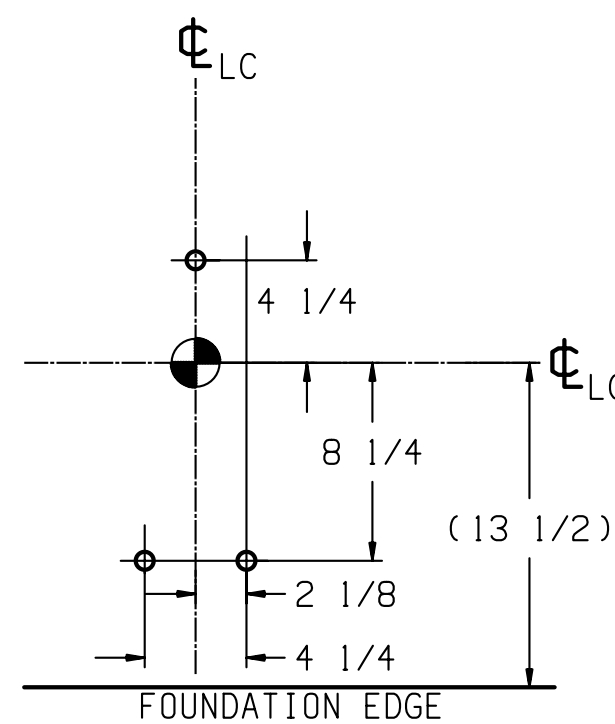
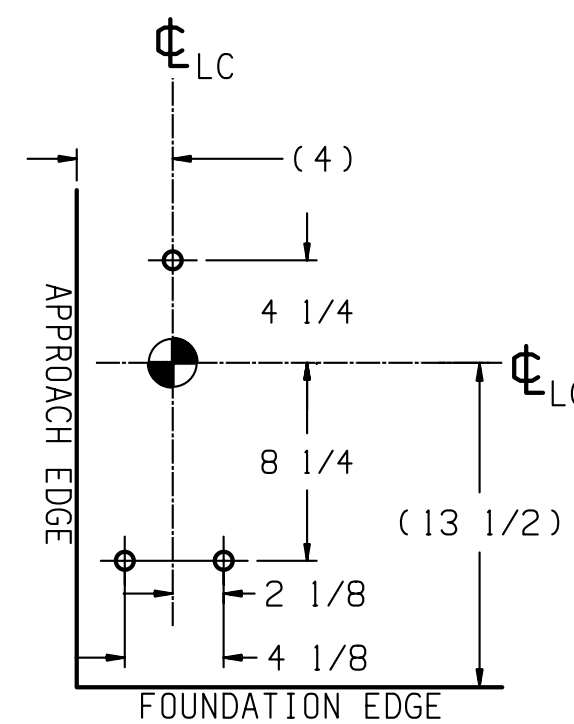


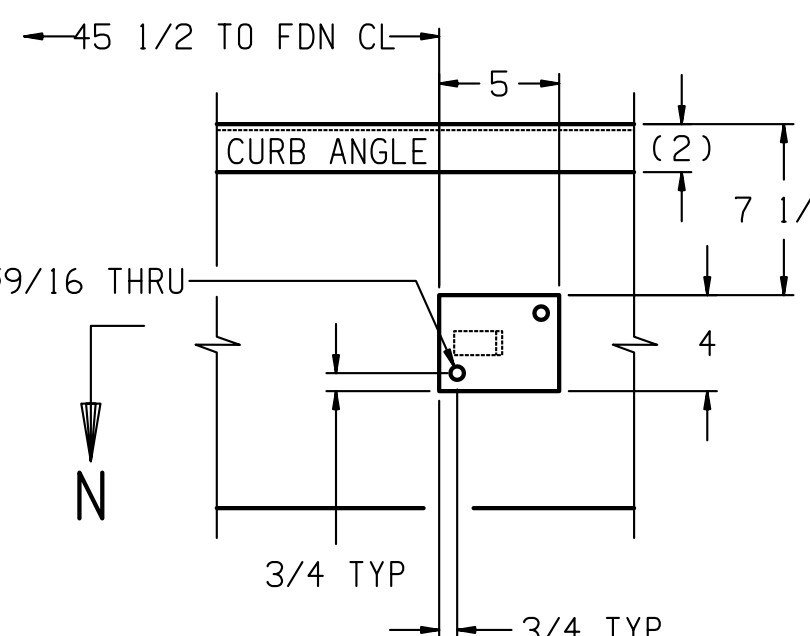
SECTION A-A



DETAIL "L"  
ANCHOR LOCATIONS  
(OTHER SIDE IS OPPOSITE)

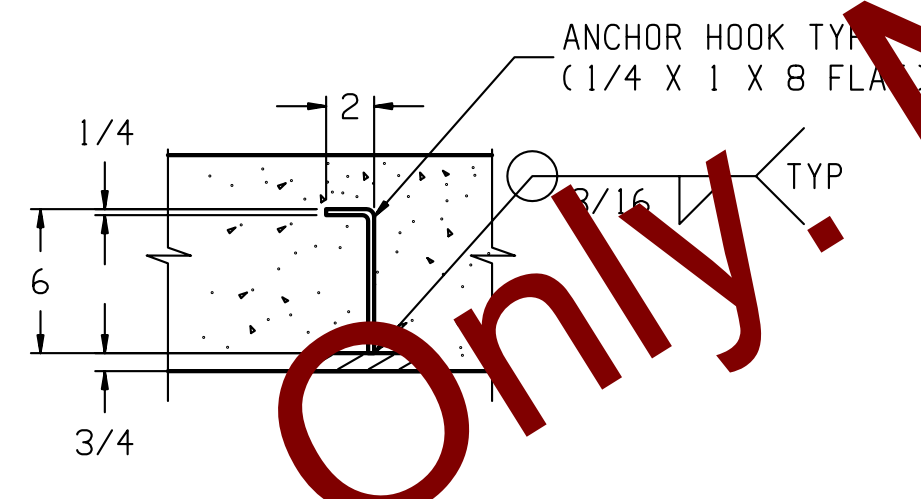


DETAIL "K"  
ANCHOR LOCATIONS  
(OTHER SIDE IS OPPOSITE)

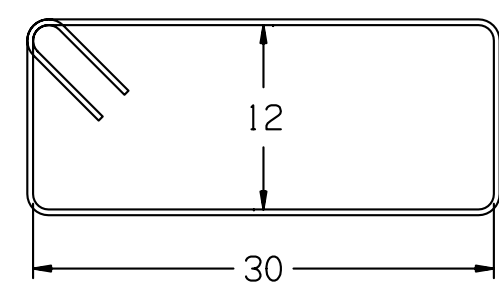


VIEW J-J

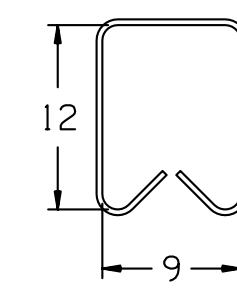
SCALE: 1/8  
BUMPER PLATE ASSY'S: TWO EACH END,  
MATERIAL: H.R. STEEL, (BY OTHERS)



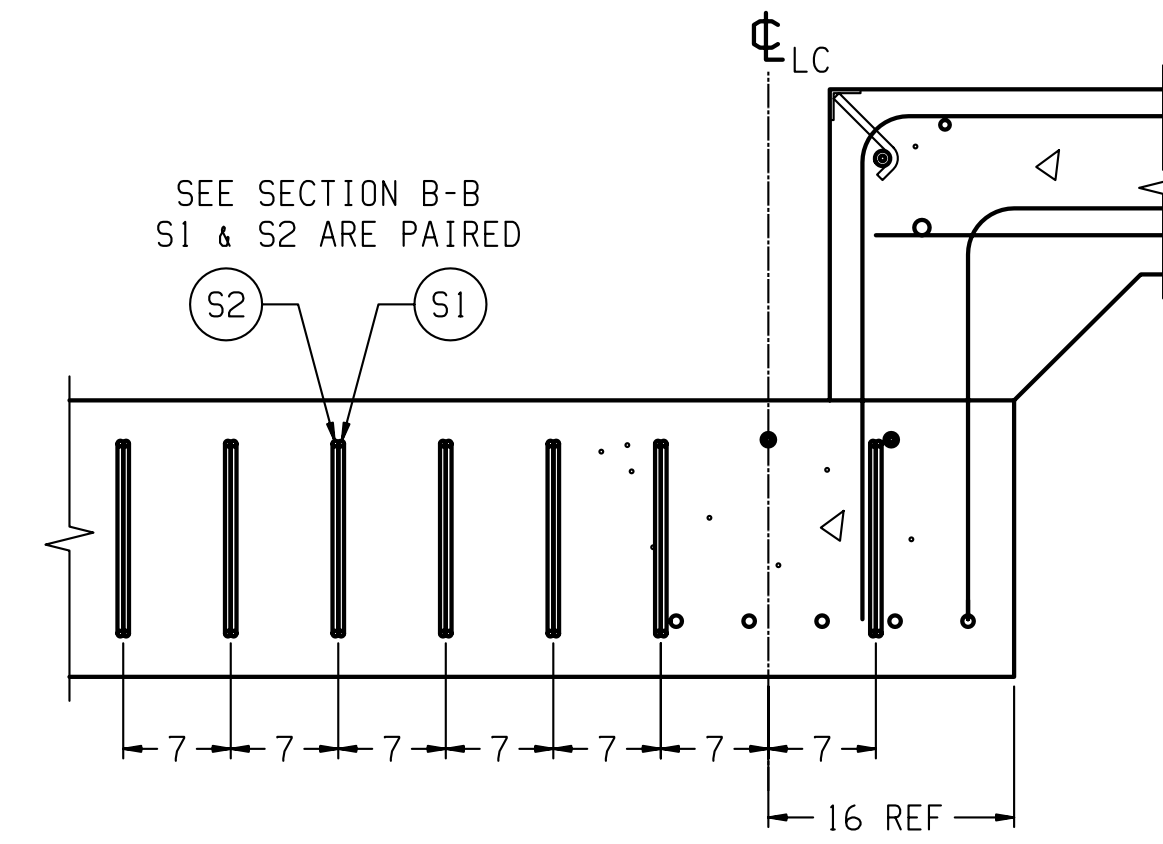
SECTION N-N



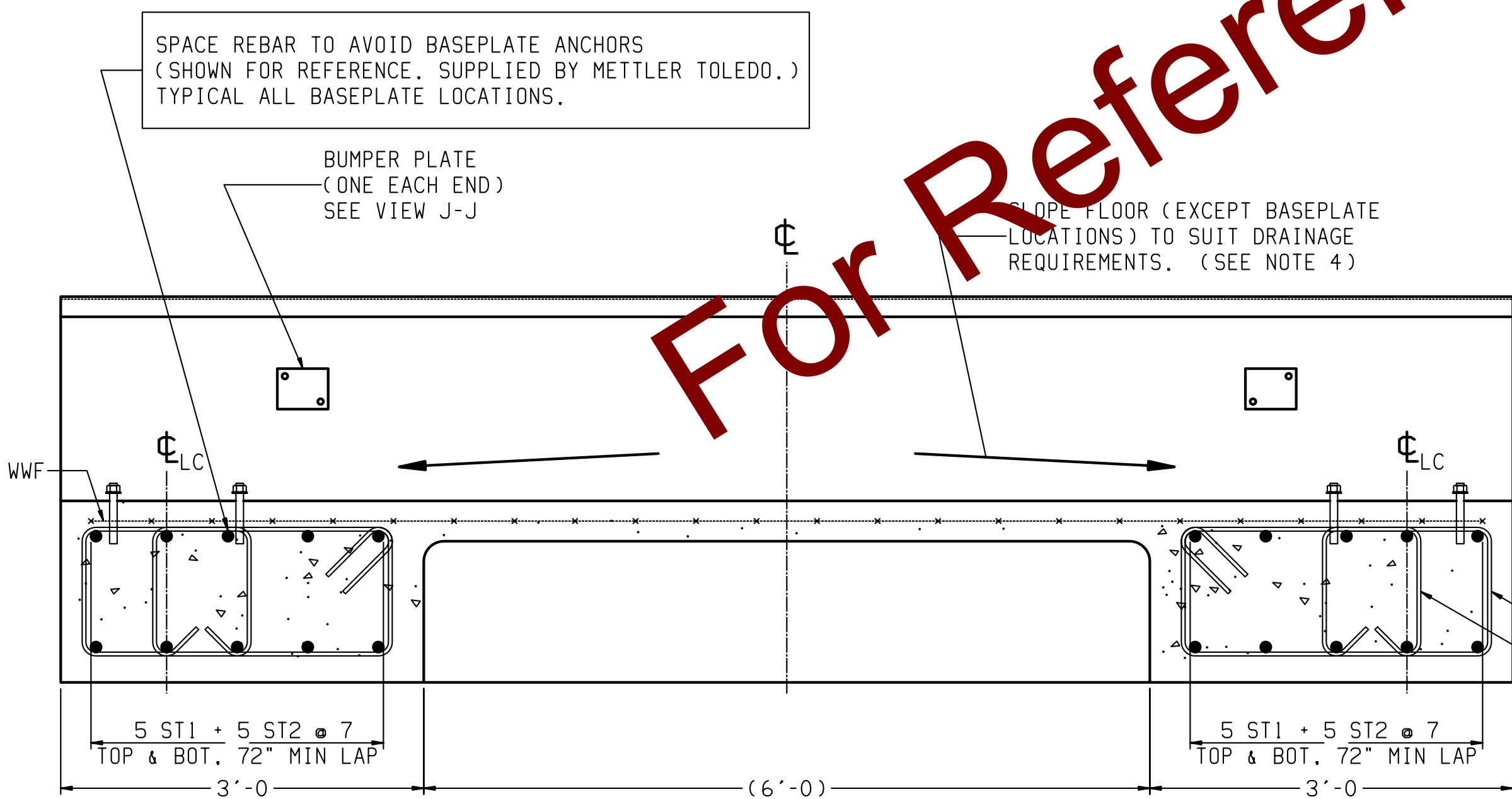
DETAIL ITEM S1  
AT ANCHOR LOCATIONS  
(FORM TO INSIDE DIMENSIONS)



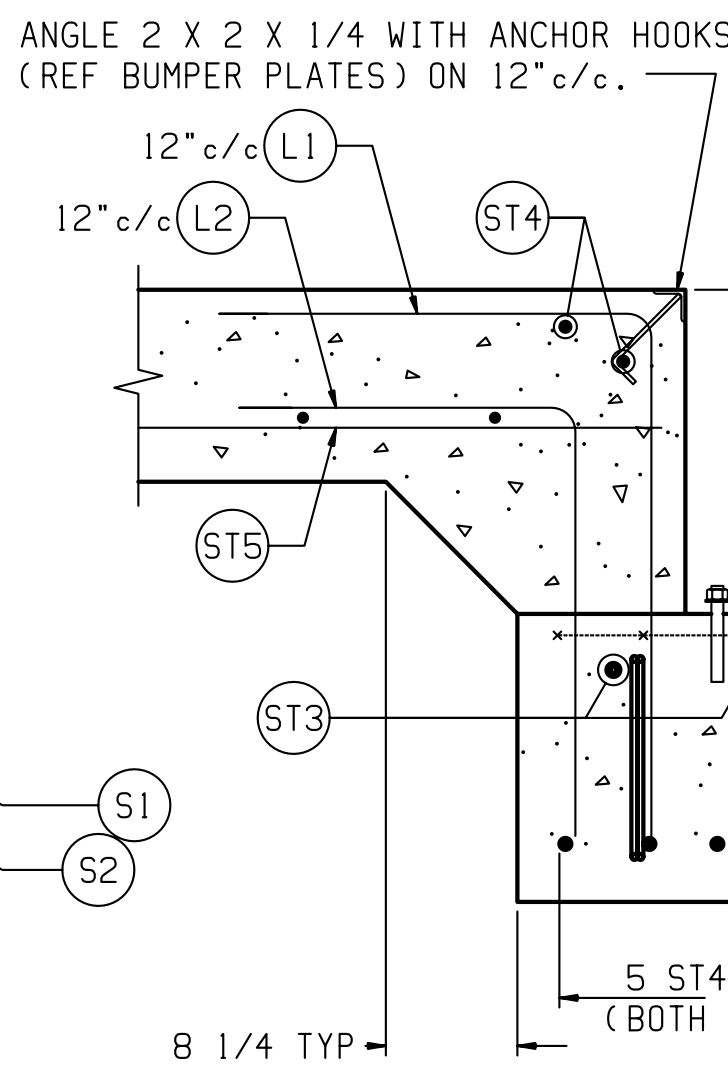
DETAIL ITEM S2  
AT ANCHOR LOCATIONS  
(FORM TO INSIDE DIMENSIONS)



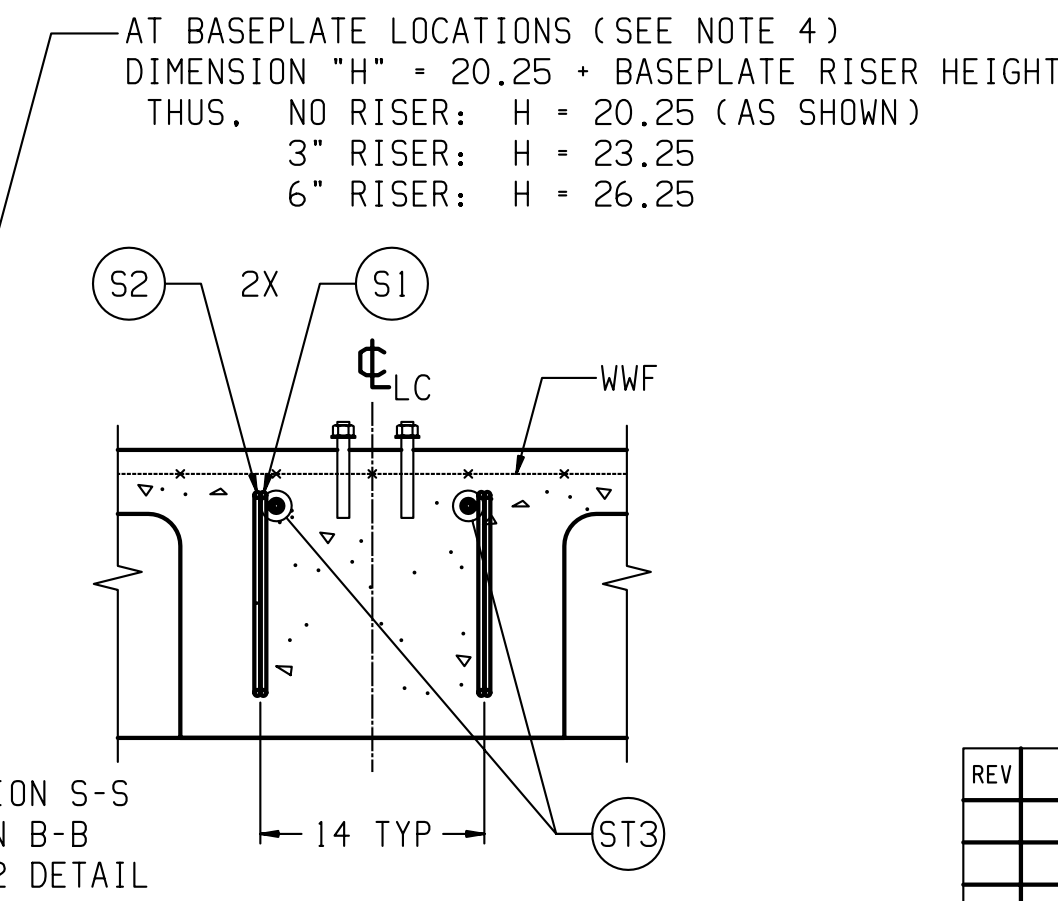
SECTION S-S  
BOTH ENDS OF BOTH MAIN BEAMS  
(4 PLACES TOTAL)



SECTION B-B  
SCALE 1/12



SECTION C-C  
SCALE 1/12  
(TYPICAL END WALL)



SECTION D-D  
SCALE 1/12  
(TYPICAL FOOTER)  
SINGLE BASEPLATE

REINFORCING STEEL SCHEDULE (A.S.T.M. A-615 GRADE 60)						
SYM		QTY	SIZE	LOCATION, DIRECTION	A	
					B	WGT
ST1	20	#8	FLOOR BEAMS, LONG.	40'-0"		2136
ST2	20	#8	FLOOR BEAMS, LONG.	37'-8"		2012
ST3	8	#7	FOOTERS, LATERAL	11'-6"		189
ST4	10	#5	ENDS, LATERAL	11'-6"		120
	24		APPROACHES, LATERAL			288
ST5	24	#5	APPROACHES, LONG.	9'-6"		238
S1	36	#3	LARGE SHEAR LOOP	8'-0"		109
S2	36	#3	SMALL SHEAR LOOP	4'-6"		61
L1	24	#5	APPROACH TO END TIES	2'-4"	2'-8"	126
L2	24	#5	APPROACH TO END TIES	1'-10"	2'-2"	101

L1 & L2 GIVEN WITHOUT RISER BASEPLATES.  
DIMENSION "B" WILL VARY WITH THE ACTUAL  
HEIGHT OF RISERS USED, AS FOLLOWS:

	L1	L2
NO RISERS	2'-8"	2'-2"
3" RISERS	2'-11"	2'-5"
6" RISERS	3'-2"	2'-8"

MATERIAL SUMMARY	
CONCRETE (CU. YDS.)	41.5
REINFORCING STEEL (LBS)	5380
WWF: 6x6-W1.4xW1.4 (SQ. FT.)	875

NOTES:

- 1) USE MINIMUM 3000 PSI STRENGTH CONCRETE AT 28 DAYS WITH 5-7% AIR ENTRAINMENT.
- 2) USE MINIMUM 60KSI YIELD DEFORMED REINFORCING STEEL. REBAR MINIMUM DEPTH OF COVER SHOULD BE IN ACCORDANCE WITH THE LATEST ACI BUILDING CODE REQUIREMENTS FOR STRUCTURAL CONCRETE (ACI 318-SECTION 7.7). UNLESS OTHERWISE SPECIFIED.
- 3) FOUNDATION REQUIRES 1500 PSF RATED SOIL.
- 4) TOP OF CONCRETE AT BASEPLATE LOCATIONS TO BE LEVEL AND IN ONE PLANE  $\pm 1/8"$ .
- 5) DIAGONAL MEASUREMENTS ENDWALL TO ENDWALL MUST BE EQUAL WITHIN  $1/2"$ .
- 6) BASEPLATES ANCHORS TO BE SUPPLIED BY METTLER TOLEDO. USE BASEPLATES AS TEMPLATES TO LOCATE ANCHORS DURING SCALE INSTALLATION.
- 7) RAMP LENGTH: -PER LOCAL REGULATIONS  
-1/2" SLOPE PER FOOT TYPICAL
- 8) CONTRACTOR SUPPLIES:
  - EXCAVATION
  - REINFORCING STEEL
  - CURB ANGLE ASSEMBLIES (SECT C-C)
  - CONCRETE AND FORMS
  - 1 1/2" DIA CONDUIT
  - BUMPER PLATE ASSEMBLIES (VIEWS J-J & N-N)

DRAWING IS TO SCALE ONLY WHEN BORDER MEASURES 22-7/8" X 35" (FULL SIZE)

REV	CHANGE	BY	DATE	SCALE .02	METTLER TOLEDO
				DATE 10/19/10	
				DRN KRS APPD	
				TITLE VTC10X, FON. BEAM SLAB.	
				70' X 11' W/ RISER OPTION	
				UNLESS OTHERWISE SPECIFIED, ALL DIMENSIONS ARE IN INCHES, AND DIMENSIONAL TOLERANCES ARE:	
				FRACTIONAL .XX $\pm .02$	
				DECIMAL .XX $\pm .005$	
				ANGULAR $\pm .5^\circ$	
				THIS PRINT IS FURNISHED WITH THE UNDERSTANDING THAT THE ESSENCE THEREOF WILL NOT BE REPRODUCED IN WHOLE OR IN PART WITHOUT WRITTEN AUTHORIZATION OF METTLER-TOLEDO, INC. ALL DESIGNS ARE THE PROPERTY OF METTLER-TOLEDO, INC. AND WILL BE PROTECTED BY PATENTS.	
				TC208561	REV